
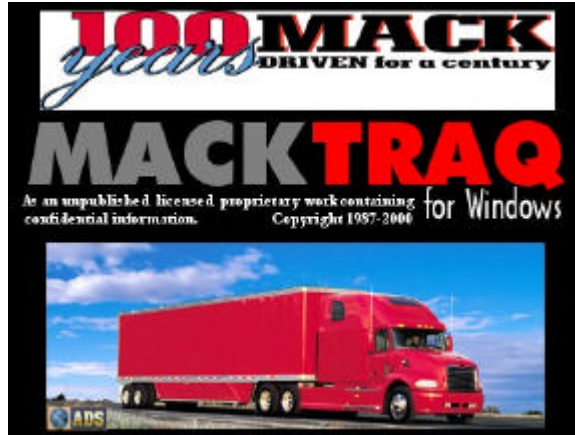
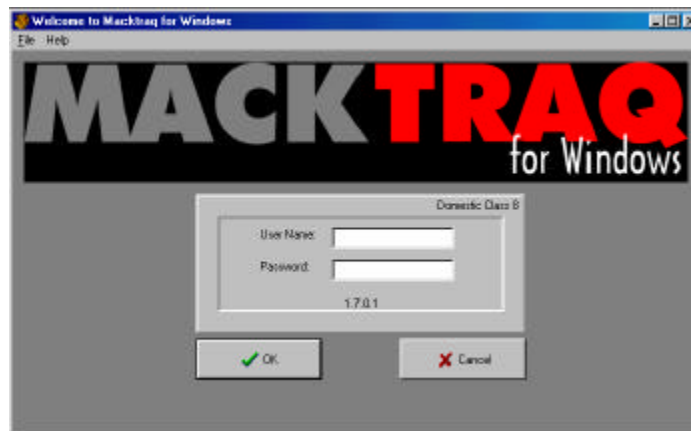


Logging into MackTraq for the First Time

1. Double Click on the MackTraq for Windows Icon. 
2. The first screen you will see is the MackTraq for Windows Splash screen. This screen is displayed while MackTraq loads.



3. After MackTraq loads, the User Login screen will be displayed. Type in your username in the first field and your password in the second, then click the OK button. Your username and password were created during the Administration portion of the MackTraq install, or given to you by your MackTraq System Administrator.



4. The first time you log into MackTraq, you will be presented with a Wizard. This Wizard will continue to appear each time you log into MackTraq, until you create a Customer Folder. If you are new to MackTraq, the "Take a quick tour of the software" option will get you familiar with the software. Otherwise, just click OK to begin working.

